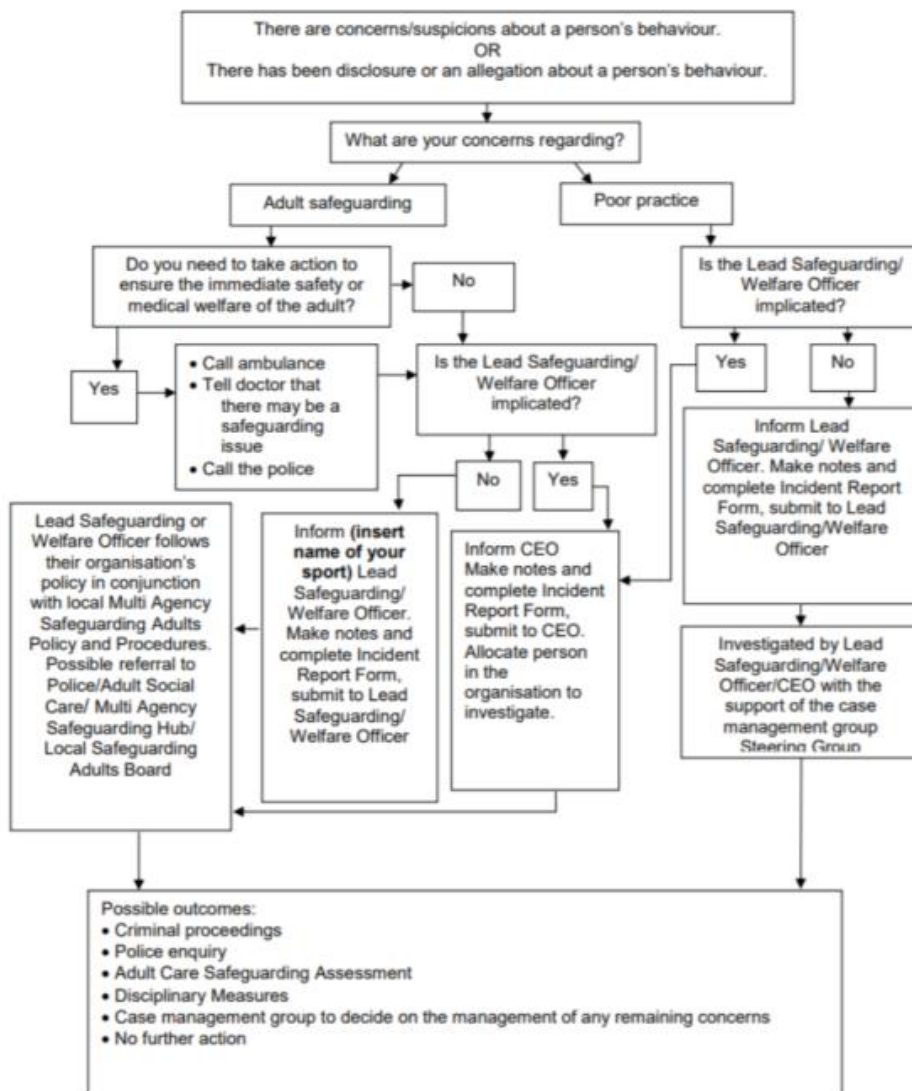




Adult Safeguarding Dealing with concerns or suspicions for vulnerable adults

Procedure for dealing with concerns, suspicions or disclosures with vulnerable adults

Dealing with Concerns, Suspicions or Disclosure



Remember to involve the adult at risk throughout the process wherever possible and gain consent for any referrals to social care if the person has capacity.